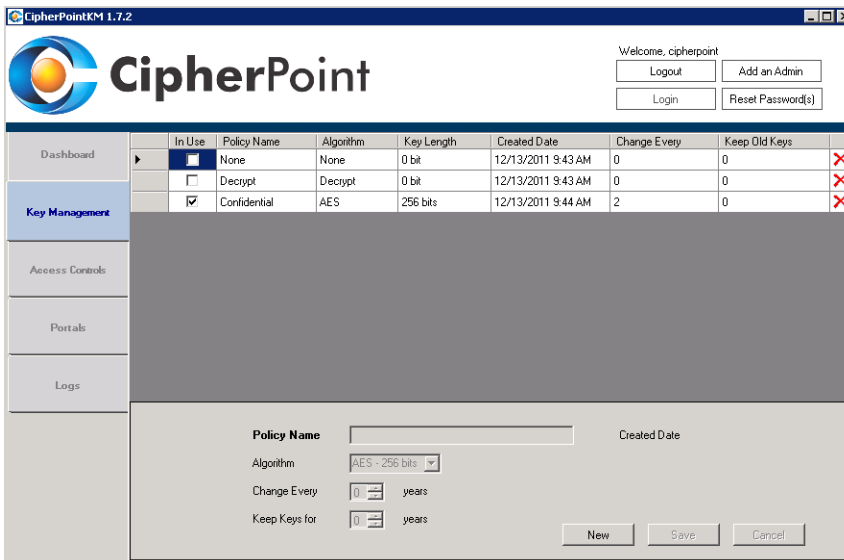


## CipherPointKM™

CipherPointKM is an advanced data security and key management console for SharePoint environments that contain sensitive or compliance regulated information. CipherPointKM provides critical key management and data security management functions, including reporting, access control, and management of keys used in farms running CipherPointSP agent software.

CipherPointKM provides a data security management dashboard from which IT security managers can easily develop and deploy key management policies.



The screenshot shows the CipherPointKM 1.7.2 interface. At the top, there is a navigation menu with options: Dashboard, Key Management (selected), Access Controls, Portals, and Logs. The main content area displays a table of encryption policies:

In Use	Policy Name	Algorithm	Key Length	Created Date	Change Every	Keep Old Keys	
<input checked="" type="checkbox"/>	None	None	0 bit	12/13/2011 9:43 AM	0	0	✗
<input type="checkbox"/>	Decrypt	Decrypt	0 bit	12/13/2011 9:43 AM	0	0	✗
<input checked="" type="checkbox"/>	Confidential	AES	256 bits	12/13/2011 9:44 AM	2	0	✗

Below the table is a configuration form for a new policy:

- Policy Name:
- Created Date:
- Algorithm:
- Change Every:  years
- Keep Keys for:  years

Buttons: New, Save, Cancel

### CipherPointKM Key Management

CipherPointKM is part of a comprehensive data security and compliance solution. It provides advanced encryption key management, using a policy-based mechanism to automatically distribute, expire, rotate, and retain content encryption keys.

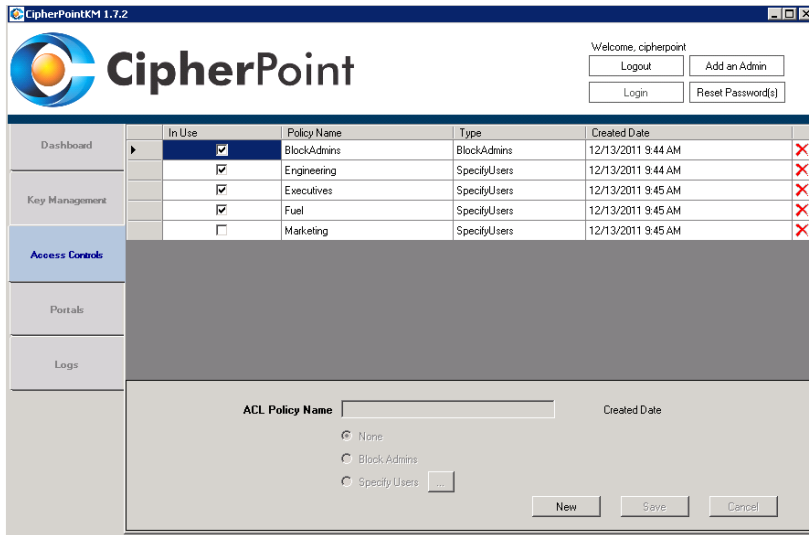
CipherPointKM adds an additional layer of access control for SharePoint farms that effectively secures sensitive content from the insider threat (SharePoint administrators), ensures compliance with numerous compliance regulations, while ensuring that authorized users have easy, transparent access to their information.

### Features

- Security and encryption key management for multiple SharePoint servers and farms
- Enables compliance with multiple regulations and standards
- Advanced, automated key management capabilities
- Allows granular encryption policies to be created and easily deployed
- Secures content stored in SharePoint with configurable granularity, including entire sites, or specific libraries
- Comprehensive audit log and reporting
- Dashboard for security management staff

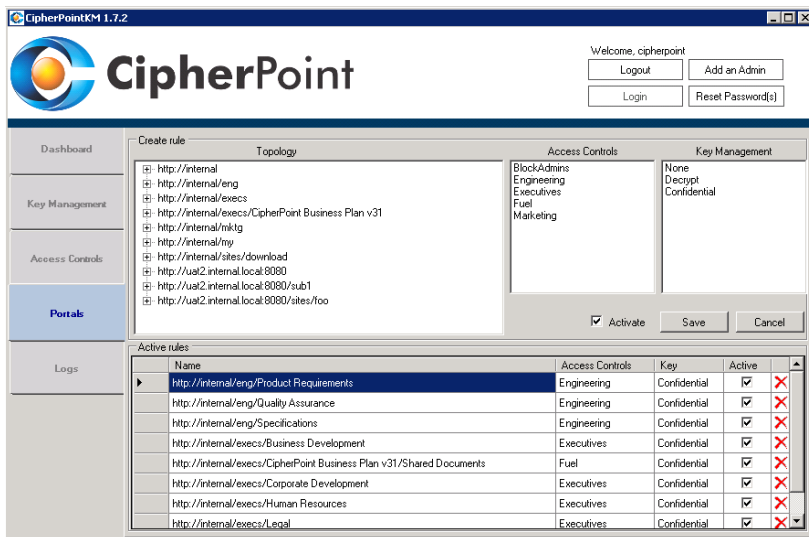
### Benefits

- Enable the use of SharePoint for Human Resources, Intellectual Property, Legal and other highly sensitive information
- Enforces business need to know and separation of duties of SharePoint, Database and Server Administrators
- Protects sensitive documents and files from unauthorized access
- Apply encryption policy on a per user, library, folder, list, or site basis as needed
- Allows IT security to regain control over the security and privacy of information stored in SharePoint
- Makes security for sensitive content in SharePoint simple
- Enables compliance with many regulations
- Allows organizations to avoid having to publicly disclose breaches



CipherPointKM Access Controls

The CipherPoint solution allows IT organizations and IT security staff to regain control of SharePoint from a data security perspective and ensure that only authorized users with business need to know can gain access to sensitive data. CipherPointKM is easily configured to provide protection across the portions of your SharePoint infrastructure containing sensitive or regulated content. The product does not require any SharePoint expertise and is simple to configure and deploy to specific destinations in your SharePoint sites, or for specific users or groups of users.



CipherPointKM Protection Rules

**CipherPoint's security solution for SharePoint delivers the control and protection you require for sensitive and regulated content in SharePoint.**

## Specifications

Supports SharePoint 2007 and 2010, SQL Server 200x, RBS, and file-based repositories, MS Windows Server 2003 and 2008 32 bit and 64 bit versions.

A single CipherPointKM server is capable of managing hundreds of CipherPointSP Standard and Enterprise agents.

## About CipherPoint Software, Inc.

CipherPoint Software secures sensitive and regulated information in collaboration platforms. CipherPoint is the first provider of transparent content encryption software for Microsoft SharePoint, and was founded by IT security industry veterans with deep experience in building security technology companies. CipherPoint's products enable companies to comply with multiple regulations, enforce need to know, and protect sensitive and confidential information. Customers in healthcare, financial services, manufacturing, government, and other industries use CipherPoint to protect access to sensitive or regulated information in their SharePoint sites. CipherPoint is growing rapidly, and is headquartered in Denver, CO.

Copyright CipherPoint Software, Inc., 2012 All rights reserved. CipherPoint Software, Inc., CipherPointSP, CipherPointSP Enterprise, CipherPoint KM, and the stylized CipherPoint logo are trademarks of CipherPoint Software, Inc. SharePoint is a trademark of Microsoft. Doc. ID:CPKM003